

InfiniOR UXGFX is InfiniOR's RTOS UI software product that delivers real-time reliability, serviceability and flexible software package with easy-to-use user environment

UXGFX UI Key Feature

- Easy to use due to simple APIs
- Context base engine
 - Similar structure with Multi tasking
 - Simple code maintenance by separating Data and Draw
 - Multi-language support
- Super-fast boot support(1 Sec)

UXGFX UI Demo

- Screen scroll
- Header/Footer popup
- Image/Text array
- Touch screen
- Multi language
 - English, Korean
 - Chinese, Japanese



cf.) `slz / Org. = 686K/2.28M => "30%"`

UXGFX UI Image Tool

Image Converter

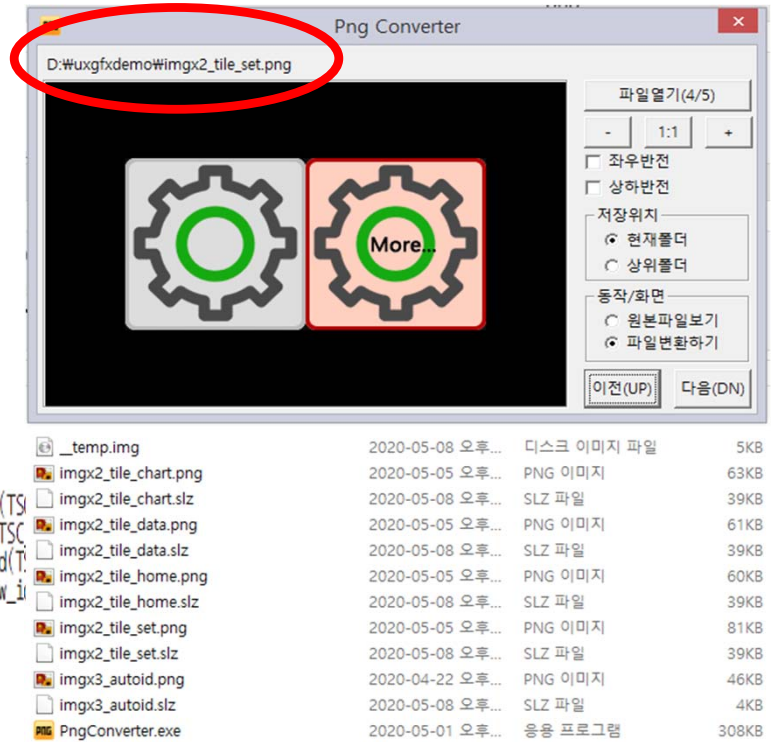
- Small image size by compression technique
- Support Multi Icon format

```

uxgfx_numcolor(_color_yellow);
sprintf(num, "%04d", user->frame++);
uxgfx_putstr(310, 7, num, UXGFX_ALIGN_RIGHT);

uxgfx_putimg_ex(14, 88, imgx2_tile_home, user->home_sel, __tsc_draw_id(TS
uxgfx_putimg_ex(168, 88, imgx2_tile_set, user->set_sel, __tsc_draw_id(TS
uxgfx_putimg_ex(14, 88, imgx2_tile_data, user->data_sel, __tsc_draw_id(T
uxgfx_putimg_ex(168, 268, imgx2_tile_chart, user->chart_sel, __tsc_draw_id

```



UXGFX UI Font Tool

Font Converter

- Support Multi-language
- Font data auto-generated
- Support Multi-line text.
- No need further coding.

```

; *****
; INCLUDE FILES
; *****
#include <stdint.h>
; *****
; message macro
; *****
#define LANG_ITEM(x)          __kor_##x
#define LANG_MSG(x)          const uint16_t __kor_##x[]
#define LANG_MSG_TBL(x)      const uint16_t* lang_##x##_table[]
; *****
; message data
; *****
LANG_MSG(000) = {0xFFFF, 0x0000};
LANG_MSG(001) = {0xFFFF, 0x0117, 0x0101, 0x0112, 0x0020, 0x0114, 0x0107, 0x0020, 0x0100, 0x0105,
0x0103, 0x0102, 0x002E, 0x0000};
LANG_MSG(002) = {0xFFFF, 0x010B, 0x0106, 0x0115, 0x000A, 0x0020, 0x0020, 0x0020, 0x0020, 0x0020,
0x0020, 0x0020, 0x0020, 0x010A, 0x0104, 0x0109, 0x000A, 0x0100, 0x0117,
0x0101, 0x0021, 0x0000};
LANG_MSG(003) = {0xFFFF, 0x010F, 0x010B, 0x0116, 0x0110, 0x0108, 0x010C, 0x0113, 0x0000};
LANG_MSG(004) = {0xFFFF, 0x0117, 0x0101, 0x0045, 0x006E, 0x0067, 0x006C, 0x0069, 0x0073, 0x0068,
0x0111, 0x010E, 0x004B, 0x006F, 0x0072, 0x0065, 0x0061, 0x006E, 0x0000};
; *****
; message table
; *****
LANG_MSG_TBL(kor) =
{
LANG_ITEM(000), LANG_ITEM(001), LANG_ITEM(002), LANG_ITEM(003),
LANG_ITEM(004),
0
};
; *****
; end of file [UXGFX Font Maker, Infinior]
; *****

```

